

WEIHUA PROFILE





- About Us
- Main Product
- Projects Show
- Company Culture

ABOUT US

Founded in 1988, WEIHUA is a world-leading material handling solutions supplier. In 2022, WEIHUA total production facilities area reaches 3,420,000 m². At Weihua, we pursue technology-driven development and enhance our products and systems to the next level of automation by applications of artificial intelligence and IoT technology. We provide customers with bridge cranes, gantry cranes, electric hoists, intelligent multifunctional cranes, Automated Guided Vehicles (AGVs), bulk material handling equipment, port equipment & comprehensive solutions, and the solutions for turn-key material hoisting and handling engineering.



Our customers are mainly in the fields of metallurgy, steel, power, manufacturing, mining, railway, aerospace, petroleum, natural gas, chemical industries, ports, etc. You can easily find WEIHUA products in 130 countries such as the USA, Germany, the United Kingdom, and so on. We work with our representatives and offices globally to provide comprehensive & competitive portfolios of custom solutions, including product sales, spare parts & preventive maintenance, and modernization in order to add value to customers' projects throughout the product life cycle.



ABOUT US

ABOUT US



7,200 Employees

The total production facilities area is 3,420,000 m² with 7,200 employees



7200



1000-Engineer R&D Team

Led by Yang Shuzi, official member of the Chinese Academy of Sciences, and Zhang Tiegang, official member of the Chinese Academy of Engineering



1000



1200 Patents

Weihua has 87 invention patents, and as a standard setter, Weihua made 127 industry standards



1200



130 Technological Achievements

1 world record, 4 world-leading achievements, 6 world-advanced achievements



130

ABOUT US

National Laboratory CNAS Certificate Technical Testing Center



- Physical laboratory & test
- Chemistry laboratory & test
- Anti-sway & electric system laboratory
- The issued test reports are mutually recognized with more than 60 countries in the world

ABOUT US

Remote Monitoring Center

- + Product data management
- + Product operation analysis
- + Remote control & diagnosis



WEIHUA, as the first enterprise to implement 5G technology in the crane industry in the world. To establish an IoT platform, realize the application of lifting equipment product design optimization, remote monitoring, fault diagnosis, predictive maintenance and remote operation and maintenance services by using big data, which could build the chain of technology R & D and industrialization, realize the life cycle management of lifting equipment.

At present, remote monitoring center of Weihua has accumulated access to all kinds of equipment, which has involved many fields such as machinery, electromechanical and petrochemical industry etc. in 13 industries, and have successfully implemented project for customers, which could provide important support for the analysis of end-users' requirements and macroeconomic situation.



MAIN PRODUCT

 WEIHUA

320T Ladle Crane

- + Siemens PLC and Siemens inverter for control and drive.
- + Monitoring system to monitor working status.
- + Designed with 4 girders and 6 rails for large capacity.
- + Hoisting mechanism adopts redundant system design to ensure the safety and reliability of lifting liquid metal.
- + Wireless scales for real-time transmission of the weight.
- + High precision positioning
- + Safe and efficient.

MAIN PRODUCT

Smart Coil Handling Crane

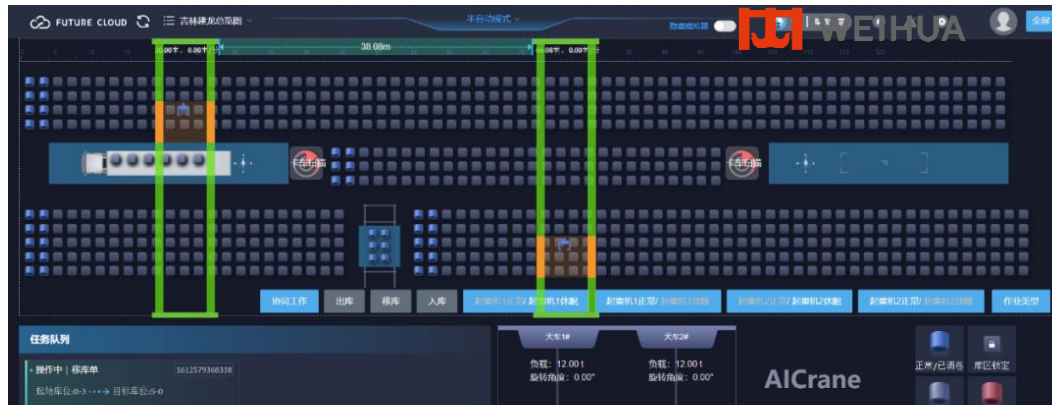
+ Weihua independently developed visual recognition system

+ Weihua independent patent anti-sway technology

- Automatic storage, smooth and efficient handling process

+ Weihua and Shougang Automation jointly develop data cloud platform

- Visual warehouse management scheduling system + warehouse data management system + intelligent production line scheduling system + equipment status monitoring system, which can be connected to all intelligent warehouse management systems.





MAIN PRODUCT

卫华起重

Tel:400-0058886

Intelligent Quenching Crane

- + Weihua independent patent wire rope adjustment device
- + Weihua independent patent anti-sway technology
- + C-type hook special spreader
- + Intelligent control system
- + High precision positioning
- + Safe and efficient

MAIN PRODUCT



Fully Automatic Metallurgical Roll Changing Crane

- + Automatic precise positioning control to ensure accurate pick and place of rolls;
- + The anti-sway control system ensures the precise operation of the roll hoisting process;
- + Fully automatic hydraulic clamp, professional roll automatic spreader;
- + Multiple sets of lifting technology can replace 10 sets of rolls at one time;
- + Accurate sensing technology to ensure the safety of the entire operation process. Anti-sway system

MAIN PRODUCT

Overhead Crane

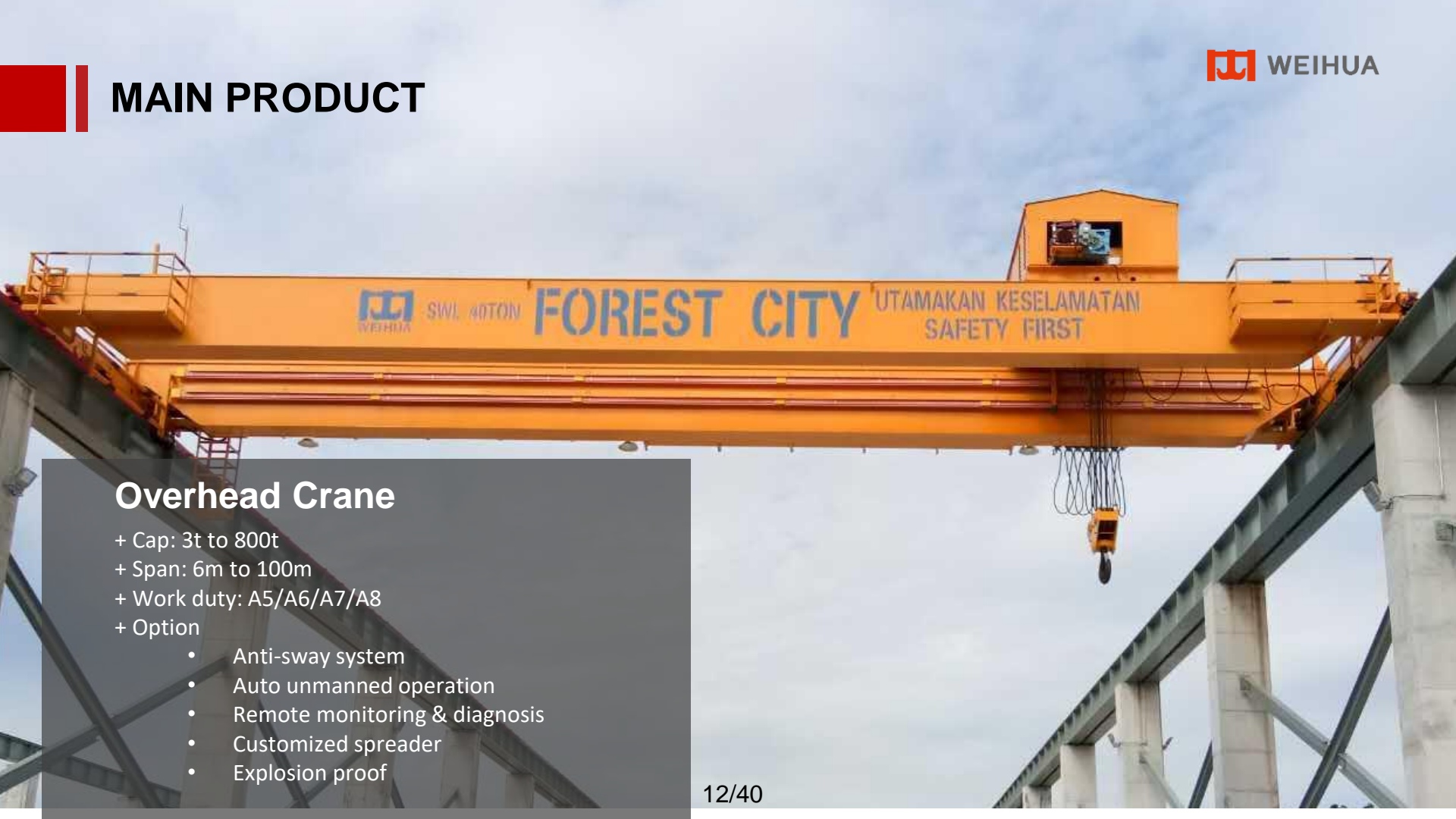
+ Cap: 3t to 800t

+ Span: 6m to 100m

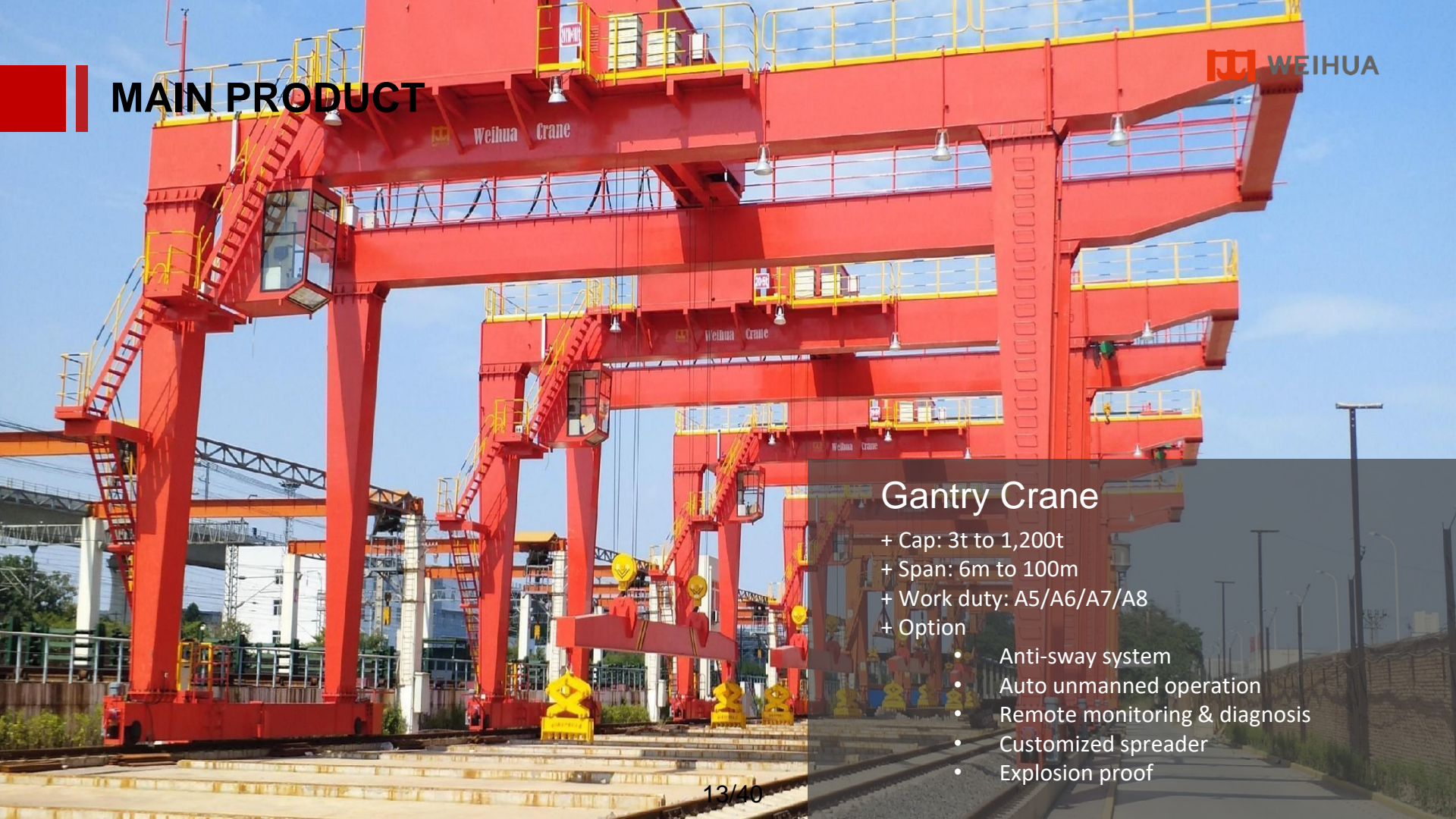
+ Work duty: A5/A6/A7/A8

+ Option

- Anti-sway system
- Auto unmanned operation
- Remote monitoring & diagnosis
- Customized spreader
- Explosion proof



MAIN PRODUCT



Gantry Crane

- + Cap: 3t to 1,200t
- + Span: 6m to 100m
- + Work duty: A5/A6/A7/A8
- + Option
 - Anti-sway system
 - Auto unmanned operation
 - Remote monitoring & diagnosis
 - Customized spreader
 - Explosion proof

MAIN PRODUCT



Weihua Crane

201

Warehousing Smart Crane

- + Automatic traveling
- + Anti-sway
- + Precise positioning control function
- + Automatic operation function
 - Automatic scheduling
 - Automatic driving
 - Material location correspondence
 - lifting action chain

MAIN PRODUCT



Automated Guided Vehicle(AGV)

- + Large capacity 100t
- + Laser anti-collision
- + Autonomous Navigation
- + All-wheel drive

MAIN PRODUCT



Stacker Reclaimer

- + Cantilever-type bucket-wheel stacker reclaimer
- + Gantry bucket-wheel stacker reclaimer
- + Amm stacker
- + Bridge-type reclaimer
- + Gate-type scrapper reclaimer
- + Circular stockyard reclaimer

MAIN PRODUCT



Port Crane

- + RMG crane
- + RTG crane
- + STS crane
- + Bulk cargo crane
- + Ship unloader

MAIN PRODUCT



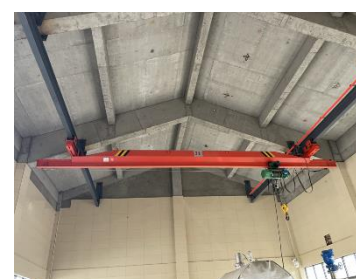
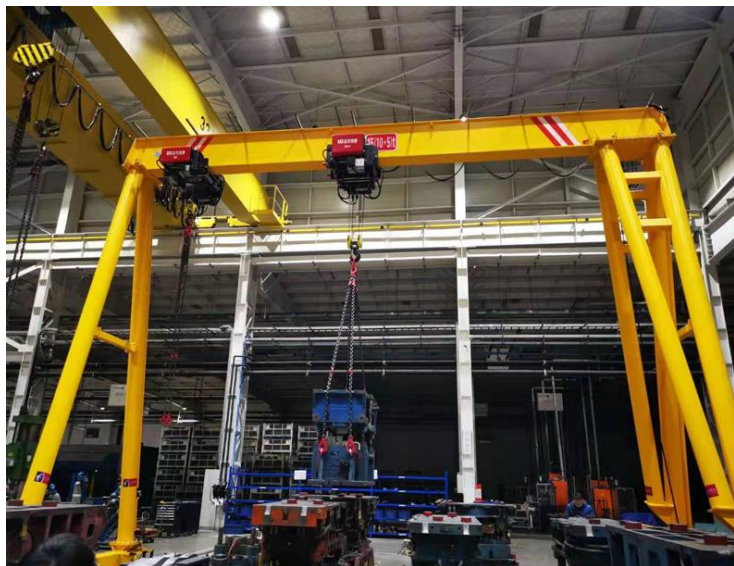
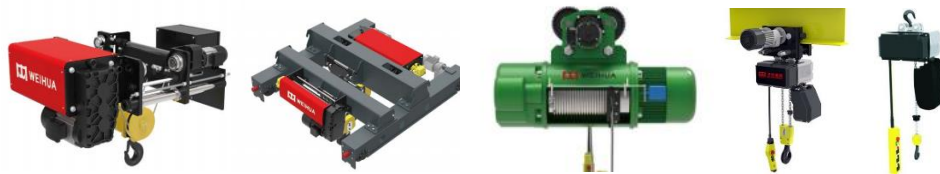
Portal Jib Crane

- + Floating dock
- + Dry dock
- + Jetty/wharf

MAIN PRODUCT



Light Lifting Equipment



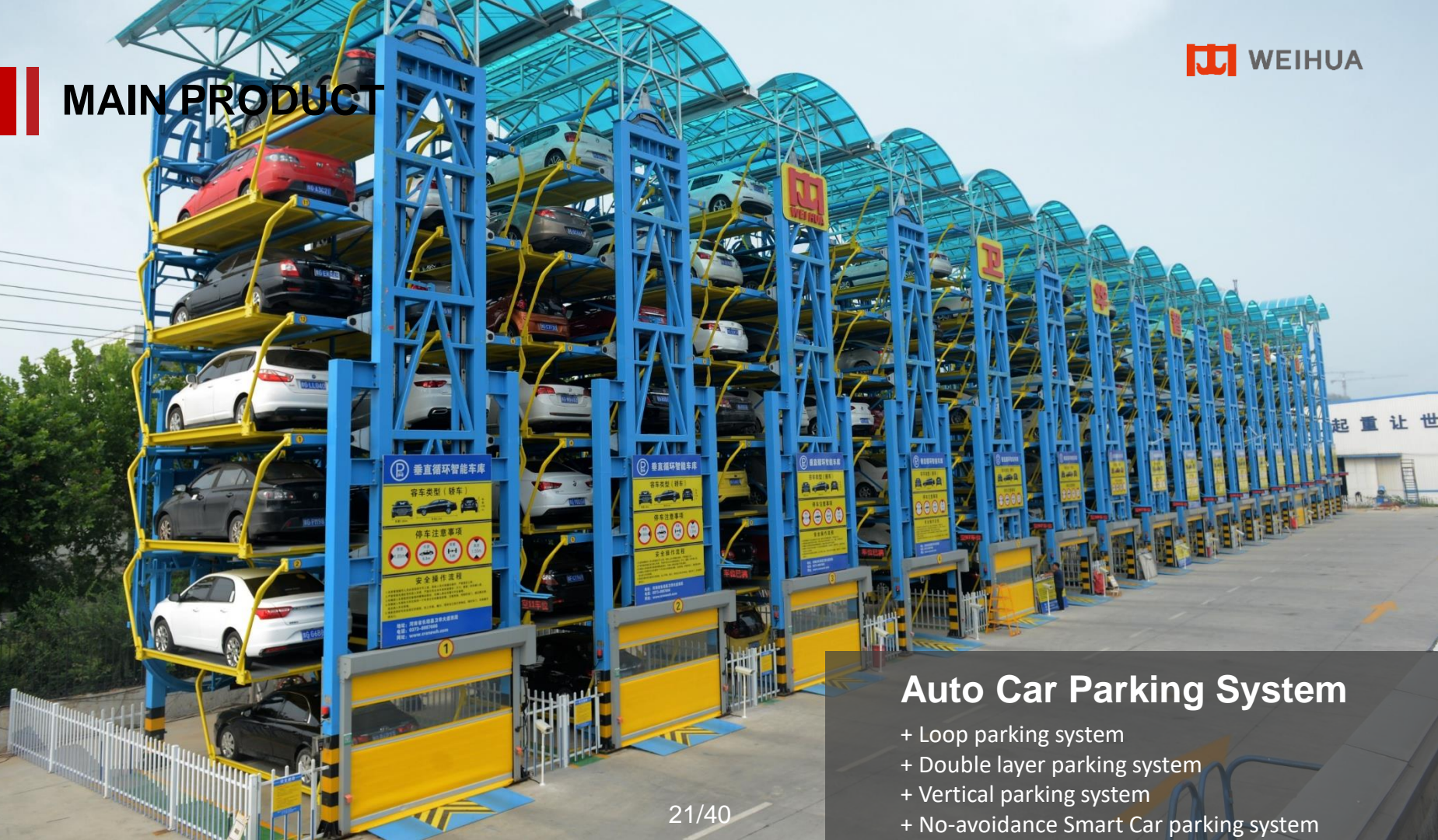
MAIN PRODUCT



Intelligent Robot

- + Explosion proof investigation robot
- + Fire fighting investigation robot
- + Fire smoke detection robot
- + Fire fighting high energy foam fire extinguishing robot
- + EOD robot
- + Inspection robot

MAIN PRODUCT



Auto Car Parking System

- + Loop parking system
- + Double layer parking system
- + Vertical parking system
- + No-avoidance Smart Car parking system

PROJECT SHOW

CFHI (China First Heavy Industries)
400+400T



320t Foundry Ladle Crane with 4 Beams and 6 Tracks



PROJECT SHOW

Anyang Steel & Iron Project



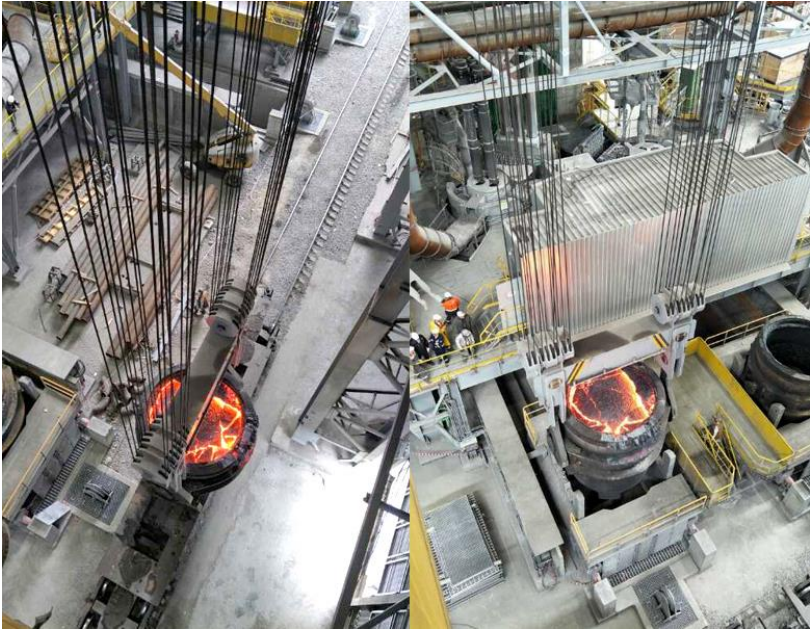
Jinxi Group Project



PROJECT SHOW

Arcelor Mittal Group Project

250-ton ladle cranes for steelmaking foundry



PROJECT SHOW

Arcelor Mittal Group Project

80-ton double girder bridge cranes for the transfer shop



25-ton electromagnetic cranes are used in the billet finished product workshop



PROJECT SHOW

Arcelor Mittal Group Project Crane Installation and Operation Training



80/32T Electromagnetic Overhead Crane for Scrap Steel Handling



PROJECT SHOW

80/32T Electromagnetic Overhead Crane for Scrap Steel Handling

Crane Monitoring and Remote Operation



PROJECT SHOW

Jiuquan Satellite
Center 50T
Anti-sway
System
Overhead
Crane



PROJECT SHOW

Ukrainian Gantry Crane



British Sheffield Project



PROJECT SHOW

Jiangxi Port Group 9 Sets ARMG Crane



Thailand Port Authority PMG Crane



2000t-62M Gangtry Crane Installation for Power Plant



**Fujian Gulei Port Bulk Cargo
Crane With Grab**



**Offshore Oil Engineering (Qingdao) Co., Ltd
800T Ship Building Gantry Crane**



COMPANY CULTURE



COMPANY CULTURE



Activity theme: With a dream to set out again

Location: Tengger Desert 75km Hiking

Oct 23~29,2019

COMPANY CULTURE



Activity: 2019 WEIHUA Changyuan International Marathon

Location: Changyuan city

Organizer: WEIHUA group

Oct 20,2019

COMPANY CULTURE

Community & Future: WEIHUA has always been committed to giving back to the society and community, helping to build a better world and future.



“Xianbao” Library

Location: A middle school in Changyuan city

This library is donated by WEIHUA, and named after “Xianbao”, the founder’s name of WEIHUA

COMPANY CULTURE

Low-carbon Strategy: For the common homeland of mankind, WEIHUA has always adhered to the low-carbon strategy which can be 3 strategies: energy saving and emission reduction, use of renewable energy, and carbon capture and storage.



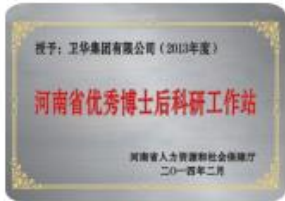
Weihua in Action

1. New design cranes with lighter self-weight and less power consumption.
2. Advanced AI cranes with unmanned operation to maximum work efficiency.
3. Build intelligent industrial park with green production lines and equipment for less carbon emission.

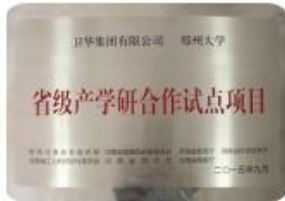
COMPANY CULTURE



Academician Workstation in Henan Province



Excellent Postdoctoral Research Station in Henan Province



Provincial Pilot Project of Industry-College-Institute (WEIHUA & ZHENGZHOU University)



Entrepreneurship & Innovation pilot model enterprise In 2017 manufacturing industry



China High-tech Enterprise certificate



China Mechanical Industry Quality Award



China Famous Brand in Mechanical Industry



China Benchmarking Enterprise



China Model Home of Staff



Best Employers in China Top 100



Leading Enterprise in Independent Innovation



China Model Enterprise in Intellectual property



THANK YOU

HENAN WEIHUA HEAVY MACHINERY CO., LTD

www.weihuacraneglobal.com | weihua@craneweihua.com

